



**DESIGN MY**  
**LIVING SPACE**  
• IDEAS • INSPIRATION • DESIGN

**Water Resistance:** PVC panels are 100% waterproof, making them ideal for areas with high moisture, such as bathrooms and kitchens<sup>12</sup>.

**Durability:** They are resistant to damage from hot water, steam, and cleaning chemicals, ensuring a long lifespan<sup>12</sup>.

**Easy Maintenance:** PVC panels are simple to clean and maintain.



#1507



#1508



**#1512**



**#1513**



#1516



#1517





#1518



#1526



**#1527**



**#1530**



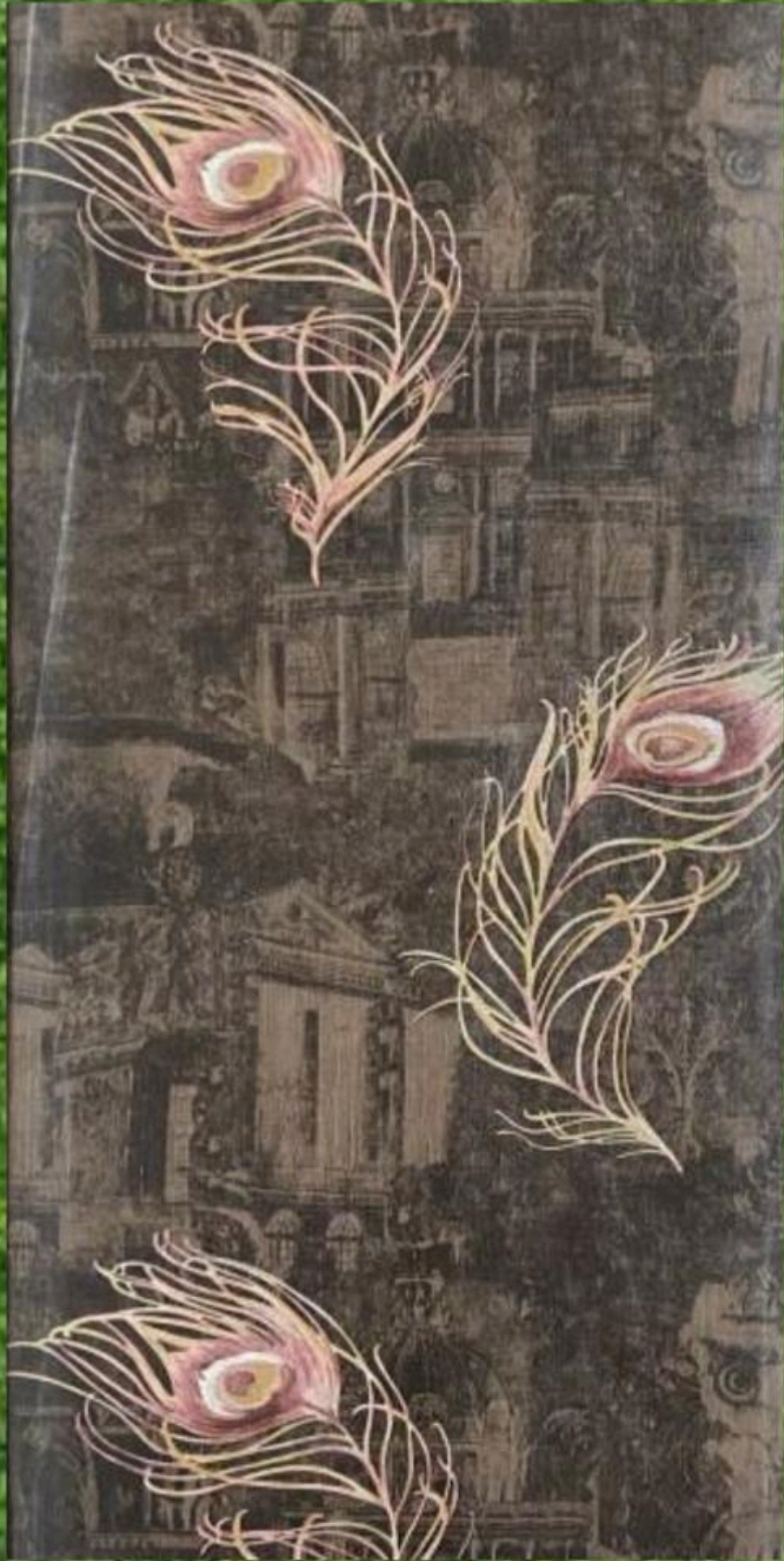
**#1531**



**#1533**



#1534



#1535





**#1540**



**#1541**



**#1542**



**#1545**



#1546



**#1553**



**#1554**

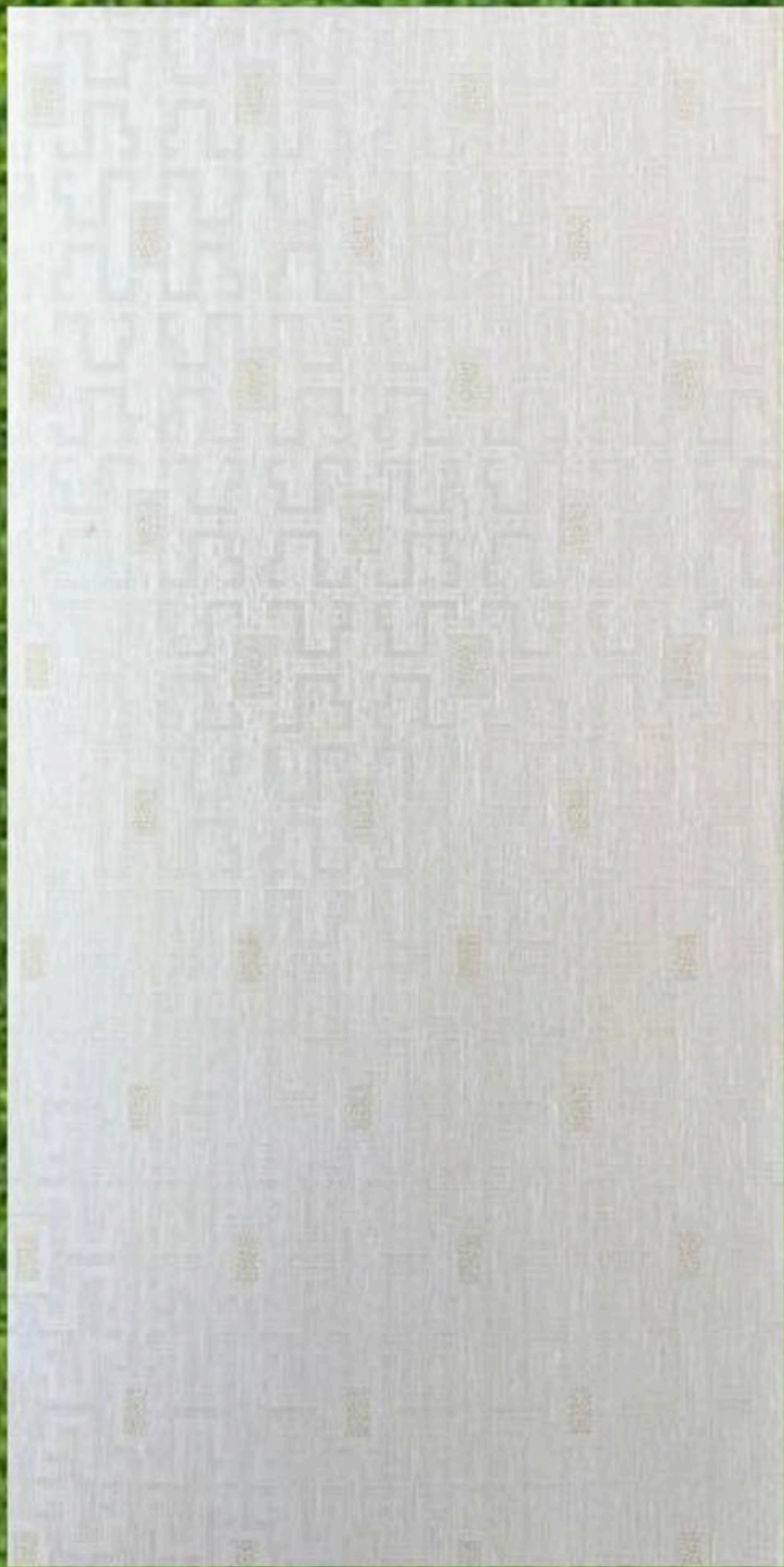


**#1557**

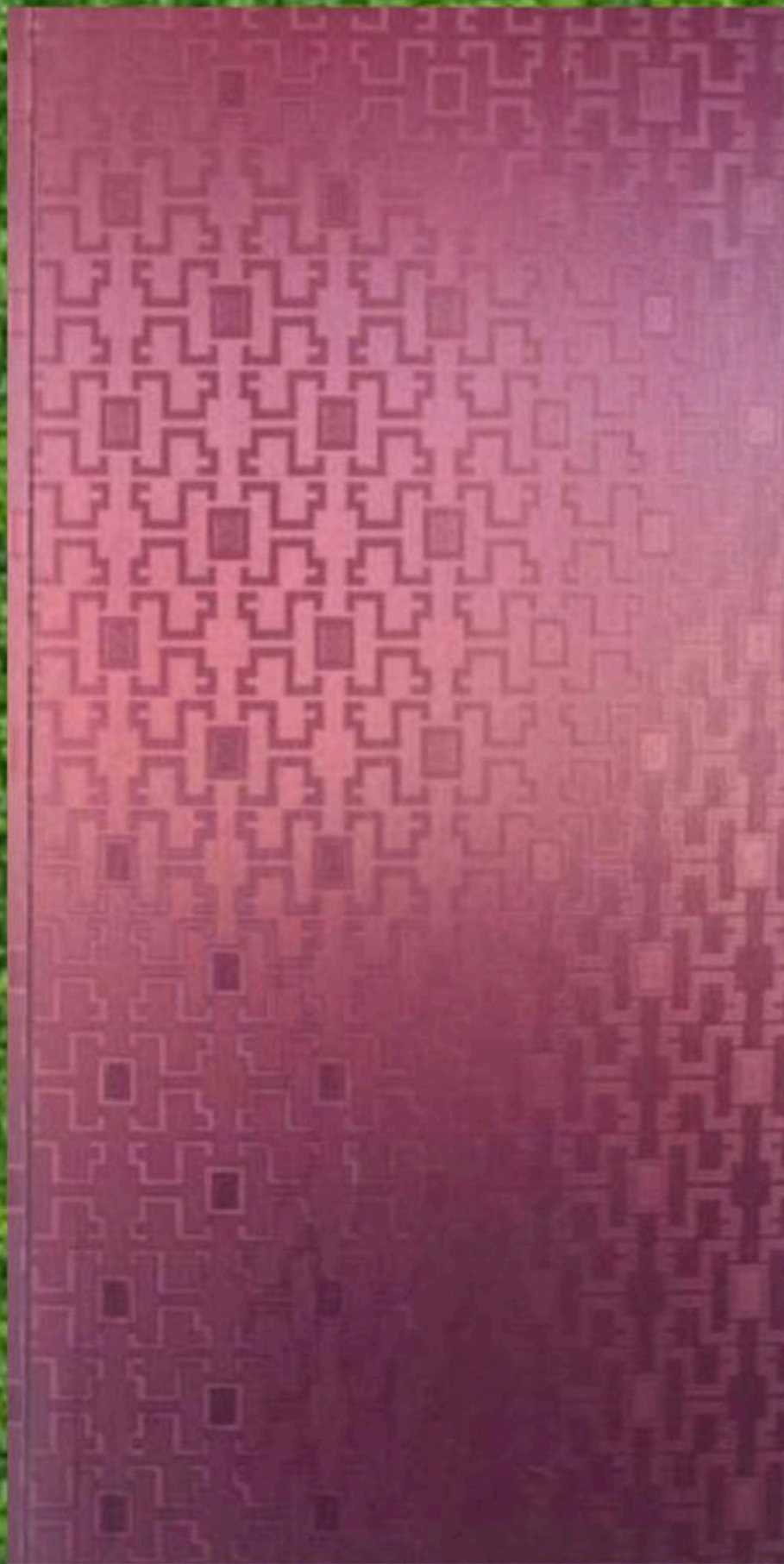




**#1558**



#1559



#1560



**#1571**



**#1572**



**#1576**



**#1577**



#1593





#1594



**#2517**



#2526



#2534



**#2542**



**#2545**



#2548



#2549





#2561



#2562



*#2563*



#2564



**#2565**



**#2566**



**#2567**



**#2572**





**#2573**



**#2574**



**#2576**



#2599



# 2644



# 2645



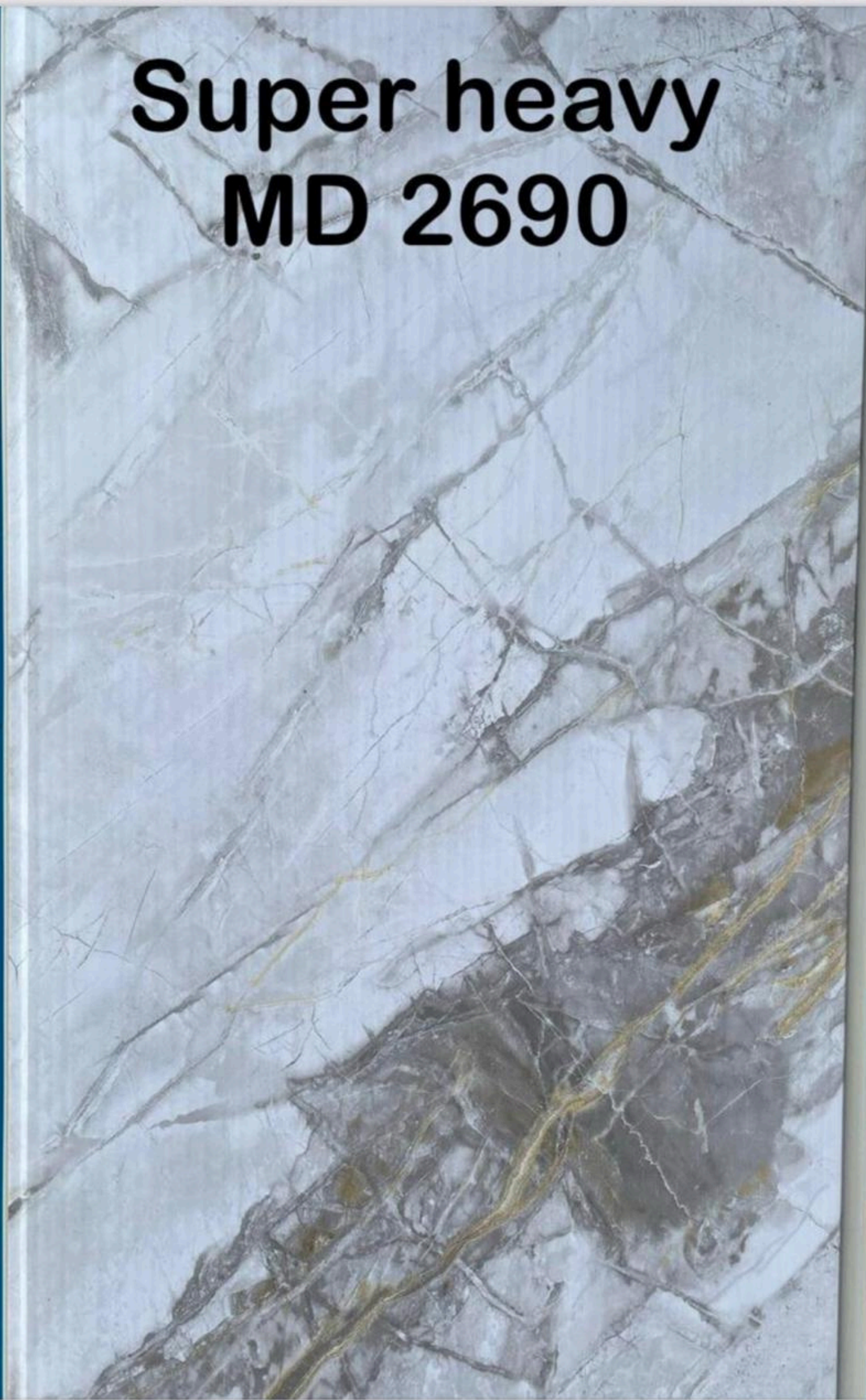
**# 2646**

# Super heavy MD 2659





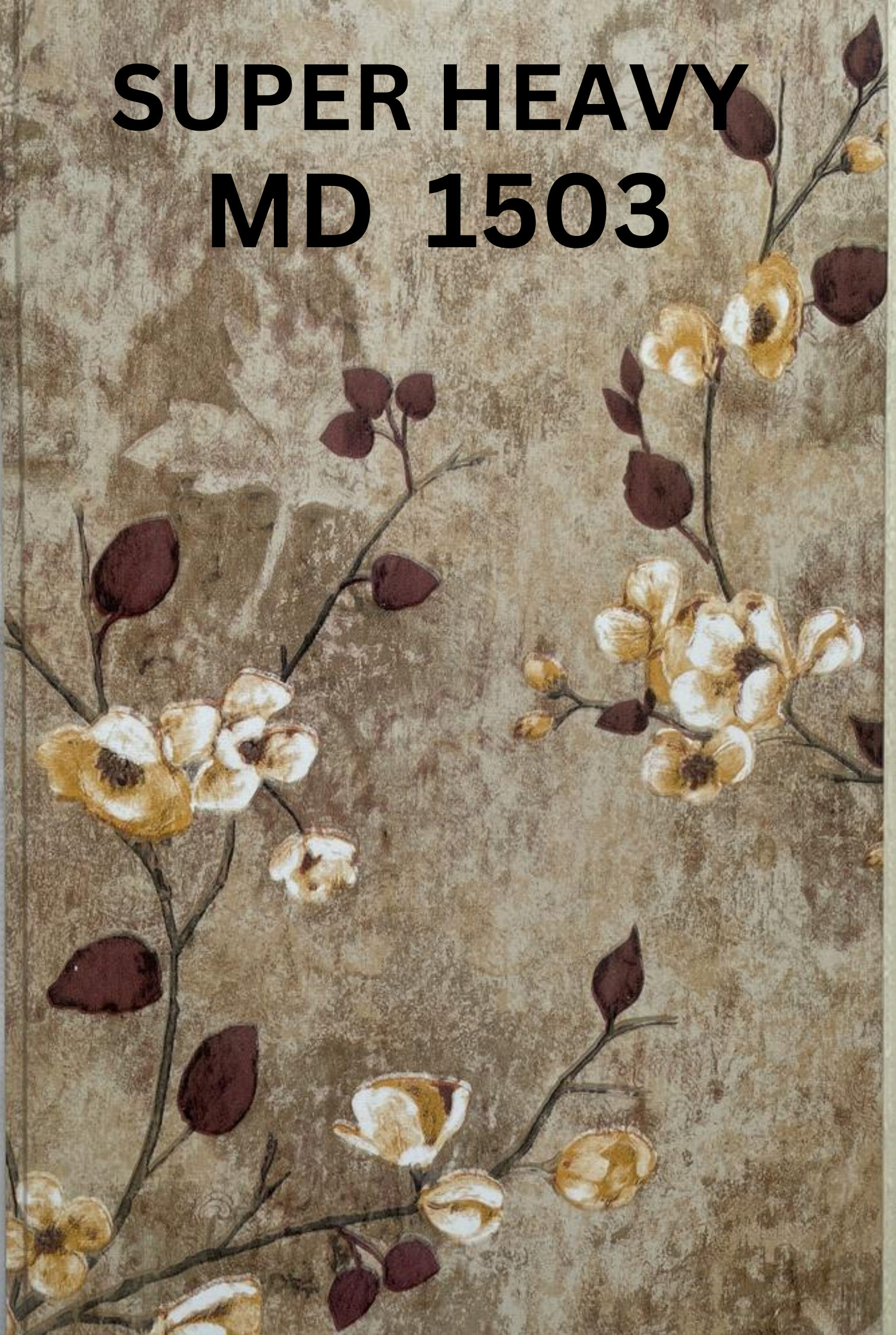
**Super heavy  
MD 2690**



# SUPER HEAVY MD 1551



# **SUPER HEAVY MD 1503**



**SUPER HEAVY**  
**MD 1524**



**SUPER HEAVY**  
**MD 1554**



**SUPER HEAVY**  
**MD 1528**









